



**LOGICDATA**  
**Electronic & Software Entwicklungs GmbH**  
Wirtschaftspark 18,  
8530 Deutschlandsberg • Austria  
T: +43 (0) 3462 51 98 0,  
F: +43 (0) 3462 51 98 530  
office@logicdata.net

**LOGICDATA North America Inc.**  
13617 Woodlawn Hills Dr.  
Cedar Springs, MI 49319 • USA  
T: +1 616 328 8841  
support.na@logicdata.net

[www.logicdata.net](http://www.logicdata.net)

EN | 2.0



**LOGICDATA**  
MOTION FOR YOUR LIFE



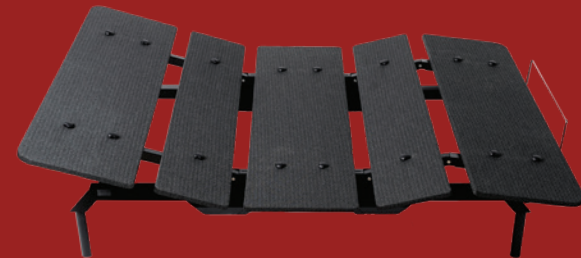
ADJUSTABLE BED  
FRAME

# Everything's Bigger in Texas.

*Austin TX is no longer America's best-kept secret. Instead, it sets a world-leading example on how to maintain authenticity while transitioning into a city that delivers on its promise. In short, it's the perfect inspiration for the mature, yet exciting COSMO Austin.*

The COSMO Austin reflects the self-assured, free-wheeling vibe of one of America's most livable cities: enhancing the minimalist aesthetic of the COSMO Sydney with an increased weight limit that caters precisely to a heightened desire for comfort and convenience.

It is designed to withstand the heavy loads of everyday life. The COSMO Austin packs a great punch in terms of power – the perfect fit for households that prioritize comfort and peace of mind. To ensure stability, we've designed the base to function perfectly with up to 900 lbs of load, strong enough that you'll never have to worry about performance or stability again.



Has a 900 pound weight capacity - one of the highest in the market.

**HEAD UP AND FOOT UP**  
Smooth up and down movement of the head and foot sections.

**WIRELESS REMOTE CONTROL**  
Move effortlessly to new bed positions at the touch of a button.

**CHILD LOCK**  
Effective protection against unintended or unauthorized use.

**PRE-SET FLAT POSITION BUTTON**  
Move gently to a sleeping position with just one touch.

**2 PRE-DEFINED MEMORY POSITIONS**  
Enjoy anti-snore or zero-gravity mode, or set your own.

**EMERGENCY LOWERING**  
Failsafe to operate the bed in case of power outages.

**FREE-FALL DESIGN**  
Reduced risk of pinching during downward motion.

**ZERO-CLEARANCE**  
Platform-friendly design that allows for maximum customization and use without legs.

**900 LB WEIGHT CAPACITY**  
Strong enough for the deepest of sleepers.

**10-YEAR LIMITED WARRANTY**  
Peace of mind, to help you sleep even better.